

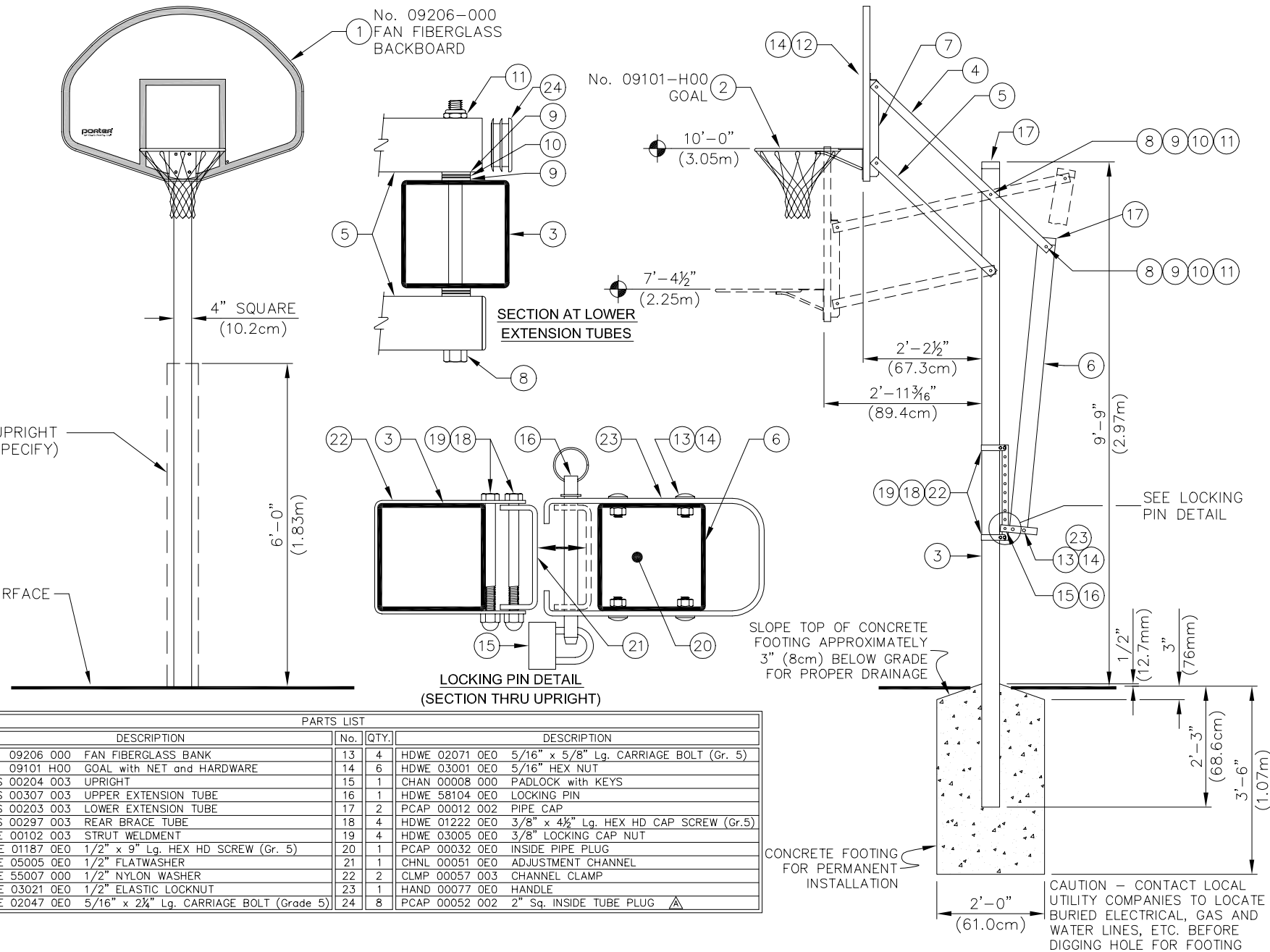
REVISION	DATE	PORTER No.
ADD EXTENSION	10-1-97	
		CUSTOMER No.
		DATE
		5-1-1994

00103-100  
**U-CAN-SLAM® OUTDOOR BASKETBALL BACKSTOP WITH HEIGHT ADJUSTMENT**

THIS DRAWING IS THE PROPERTY OF PORTER ATHLETIC EQUIPMENT COMPANY AND MAY NOT BE REPRODUCED WITHOUT WRITTEN PERMISSION

**PORTER®**  
 WORLD LEADER  
 IN QUALITY SPORTS EQUIPMENT  
 2500 S. 25th AVENUE  
 BROADVIEW, ILLINOIS 60155  
 www.porter-dth.com

DRAWING BY  
 JRH  
 CHECKED BY  
 RJM  
 PAGE No.  
 R-103-1



PARTS LIST					
No.	QTY.	DESCRIPTION	No.	QTY.	DESCRIPTION
1	1	09206 000 FAN FIBERGLASS BANK	13	4	HDWE 02071 0E0 5/16" x 5/8" Lg. CARRIAGE BOLT (Gr. 5)
2	1	09101 H00 GOAL with NET and HARDWARE	14	6	HDWE 03001 0E0 5/16" HEX NUT
3	1	TUBS 00204 003 UPRIGHT	15	1	CHAN 00008 000 PADLOCK with KEYS
4	2	TUBS 00307 003 UPPER EXTENSION TUBE	16	1	HDWE 58104 0E0 LOCKING PIN
5	2	TUBS 00203 003 LOWER EXTENSION TUBE	17	2	PCAP 00012 002 PIPE CAP
6	1	TUBS 00297 003 REAR BRACE TUBE	18	4	HDWE 01222 0E0 3/8" x 4 1/2" Lg. HEX HD CAP SCREW (Gr.5)
7	1	FRME 00102 003 STRUT WELDMENT	19	4	HDWE 03005 0E0 3/8" LOCKING CAP NUT
8	5	HDWE 01187 0E0 1/2" x 9" Lg. HEX HD SCREW (Gr. 5)	20	1	PCAP 00032 0E0 INSIDE PIPE PLUG
9	20	HDWE 05005 0E0 1/2" FLATWASHER	21	1	CHNL 00051 0E0 ADJUSTMENT CHANNEL
10	10	HDWE 55007 000 1/2" NYLON WASHER	22	2	CLMP 00057 003 CHANNEL CLAMP
11	5	HDWE 03021 0E0 1/2" ELASTIC LOCKNUT	23	1	HAND 00077 0E0 HANDLE
12	2	HDWE 02047 0E0 5/16" x 2 1/4" Lg. CARRIAGE BOLT (Grade 5)	24	8	PCAP 00052 002 2" Sq. INSIDE TUBE PLUG

- 00103-100 U-CAN-SLAM® OUTDOOR BASKETBALL BACKSTOP WITH FAN FIBERGLASS BACKBOARD AND RIGID GOAL
- See R-69 — 00069-003 UPRIGHT PROTECTIVE PADDING - RED (EACH)
- See R-9432-9 — 09432-912 UPRIGHT PROTECTIVE PADDING - BLACK (EACH)

# **SPECIFICATIONS**

## **PORTER No. 00103-100 U-CAN-SLAM® HEIGHT ADJUSTABLE OUTDOOR BACKSTOP**

(PATENT No's. 5,503,390, 5,465,957 and DES. 343,883)

Backstop shall be designed for instant height adjustments from 7' 4-1/2" (2.25m) to 10'-0" (3.05m) in approximately 4" (10.2cm) increments without the use of tools, cranks, screw mechanisms, ratchets or other mechanical devices. Face of backboard shall be supported from 3'-0" (91.4cm) at 8'-1" (2.46m) goal height to 2' 2-1/2" (67.3cm) at 10'-0" (3.05m) goal height in front of a single 4" (10.2cm) square, heavy-wall steel vertical support tube.

Four (4), 2" (5.1cm) square steel horizontal extension tubes shall extend from and pivot on each side of the vertical support tube to form a parallelogram to hold backboard plumb at all goal height settings. The two upper horizontal extension tubes shall extend behind the vertical support tube at a distance of approximately 1'-5" (43.2cm) where it shall be pivotally connected to a 4" square tube to precisely counterweight the backboard and goal for ease of raising or lowering goal height settings. Bottom end of the 4" square counterweight shall extend downward and secure in a through pin connection to lock goal at desired goal height setting. Padlock shall be provided to prevent usage by unauthorized individuals. Bottom end of counterweight tube shall be equipped with a heavy, formed steel handle for ease of raising and lowering backboard.

Backside of backboard shall be reinforced by a special structural steel channel weldment to transfer all goal impact loading directly to the rear support structure to eliminate stress on the backboard.

Structure shall be finished in a durable white, powder-coated finish. All hardware shall be plated.

Molded fiberglass backboard shall be official size (54" x 39") and shape, with orange perimeter and target area markings. Perimeter flange and structural rib pattern shall be 1-1/2" deep. Tensile strength of board shall be 8,900-11,700 PSI with a 23% to 27% fiberglass content by weight. Eight (8) 3/8-16 stainless steel threaded inserts shall be molded into backside of backboard at standard mounting centers.

Goal shall be fabricated from 5/8" diameter cold drawn alloy steel round formed to an 18" inside diameter ring. Inside of ring shall be positioned 6" from face of backboard by heavy, L-shaped, formed steel mounting plate with 4" x 3" mounting hole centers for front mounting on standard glass, wood and fiberglass type backboards.

Rim shall be rigidly braced by means of a 1/2" diameter cold drawn alloy steel round formed and welded in position for maximum support. Rim shall be provided with twelve "no-tie" net attachment clips for net attachment.

Goal shall be finished in a durable, official orange powder-coated finish.

Goal shall be furnished complete with a high quality white nylon net and plated mounting hardware.

### **OPTIONAL ITEMS TO SPECIFY**

- See Page No. R-69 for specifications on Porter No. 00069-003 Upright Padding (Each).
- See Page No. R-9432-9 for specifications on Porter No. 09432-912 Upright Padding (Each).