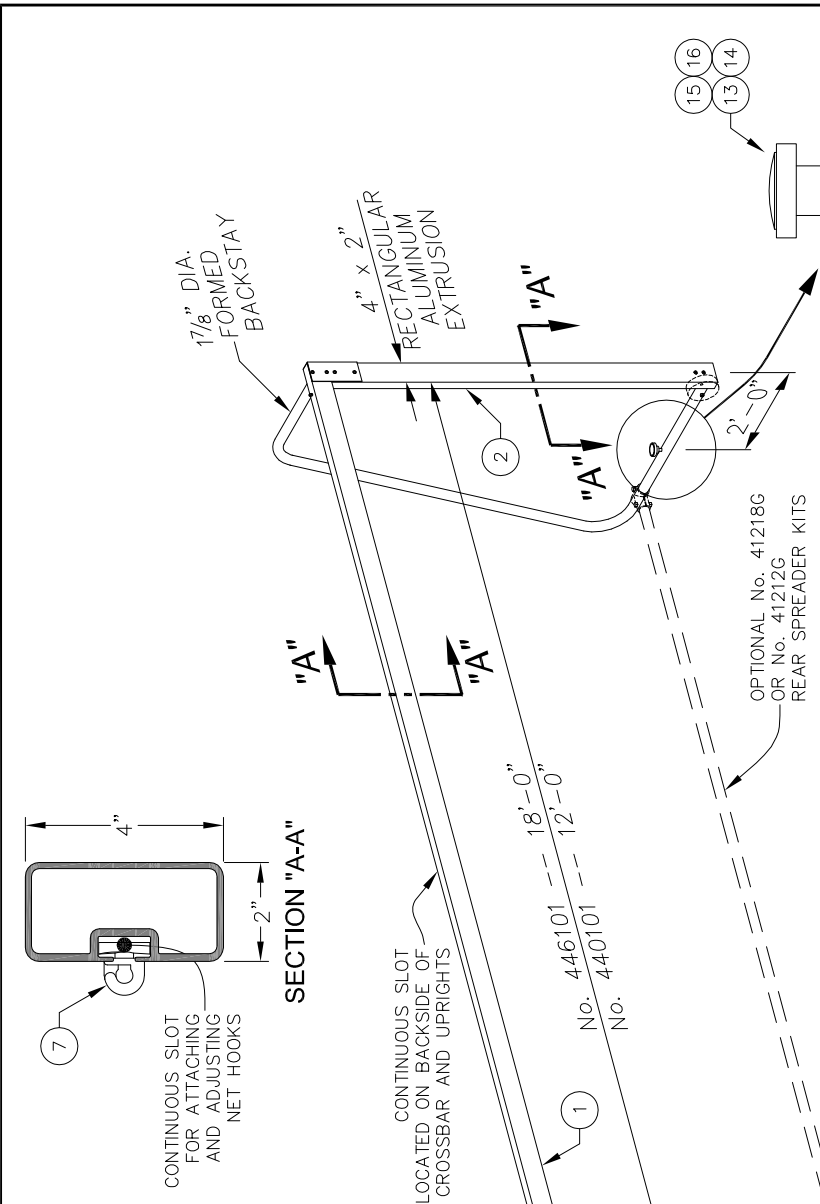


PARTS LIST		DESCRIPTION
446	440	
100	100	
QTY.	QTY.	
1	2	FRME446C CROSSBAR - 18'-8" Lg.
2	4	FRME440C CROSSBAR - 12'-8" Lg.
3	4	FRME440U UPRIGHT
4	4	BRKT 00043 003 FORMED CORNER BRACKET
5	24	HDWE 06154 0E0 3/8" x 3" Lg. BUTTION HEAD CAP SCREW
6	24	HDWE 04002 0E0 3/8" LOCK WASHER
7	24	HDWE 03002 0E0 3/8" HEX NUT
8	60	ROPE 00082 000 NET HOOK
9	20	ELEC 00218 002 CABLE TIE (NOT SHOWN)
10	4	FRME 00434 0G0 FORMED BACKSTAY
11	8	BRKT 00041 003 BACKSTAY BRACKET
12	8	HDWE 01208 0E0 3/8" x 2 1/2" Lg. HEX HEAD CAP SCREW (Gr. 5)
13	4	HDWE 03072 0E0 3/8" CONVEX LOCK NUT
14	4	HAND 00084 000 HANDWHEEL ASSEMBLY
15	4	HDWE 55007 000 1/2" NYLON FLATWASHER
16	4	SPNG 00004 000 SPRING
17	4	HDWE 05005 0E0 1/2" FLATWASHER
18	4	HDWE 01227 0E0 3/8" x 6 1/2" Lg. HEX HEAD CAP SCREW (Gr. 5)
19	4	GSTR 00035 000 6" WHEEL
20	4	HDWE 53031 0E0 3/8" PUSH NUT
21	4	SLVE 00078 002 SPACER SLEEVE
	4	HDWE 03026 0E0 3/8" WING NUT



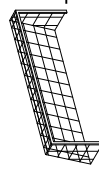
WARNING

ALL PORTABLE SOCCER GOALS MUST BE ANCHORED, TO COMPLY WITH THE "GUIDELINES FOR MOVABLE SOCCER GOAL SAFETY" AS PUBLISHED BY THE U.S. CONSUMER PRODUCT SAFETY COMMISSION. TO OBTAIN COPIES OF THIS DOCUMENT, CONTACT PORTER, OR WRITE TO THE U.S. CONSUMER PRODUCT SAFETY COMMISSION AT THIS ADDRESS:
U.S. CONSUMER PRODUCT SAFETY COMMISSION
WASHINGTON, D.C. 20207



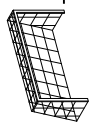
ALUMINUM SOCCER GOAL (PAIR)

6'-6" x 18'-0" PORTABLE, LESS NET



ALUMINUM SOCCER GOAL (PAIR)

6'-6" x 12'-0" PORTABLE, LESS NET



PAGE No.
R-469
R-412-1
R-413
R-407

- OPTIONAL ACCESSORIES**
- No. 00469-204 UPRIGHT PADDING
 - No. 41218G & 41212G REAR SPREADER KITS
 - No. 00413-040 INTERNAL WEIGHT BAR KIT
 - No. 00407-020 GOAL LOCKS
 - No. 00446-500 TRANSPORT/STORAGE CART (Indoor)

REVISION	DATE	porter No.
		CUSTOMER No.
		DATE
	5-1-2008	

446101 and 440101
YOUTH SOCCER GOALS - 4" x 2" ALUMINUM PORTABLE - INDOOR USE

THIS PRINT IS THE PROPERTY OF PORTER ATHLETIC, INC. AND MAY NOT BE REPRODUCED WITHOUT WRITTEN PERMISSION

PORTER
WORLD LEADER IN QUALITY SPORTS EQUIPMENT
2500 S. 25th AVENUE
BROADVIEW, ILLINOIS 60155
www.porterathletic.com

DRAWING BY	RJM
CHECKED BY	JPW
PAGE No.	G-446-1

SEE PAGE No. R-490 (IN OUTDOOR EQUIPMENT SECTION) FOR SOCCER NET INFORMATION

SPECIFICATIONS

PORTER No. 446101 ALUMINUM SOCCER GOALS – 6'-6" x 18'-0" **LESS NET** **PORTABLE (ONE PAIR)**

Soccer goals shall be 6'-6" x 18'-0" , to meet U7 through U11 requirements for competition. Goals shall be furnished in three sections (crossbar and two sideframe assemblies) to facilitate ease of setup, or transport to storage areas (with optional indoor No. 00446-500 transport/storage cart).

Crossbar and uprights are constructed of a 4" x 2" lightweight high-tensile (6063-T6) aluminum extrusion finished in a durable white powder-coated finish. Backstays shall be fabricated from 1-7/8" O.D. galvanized steel tubing, and shall be secured to the uprights with steel brackets. All aluminum extrusion sections (crossbar and uprights) shall be designed with an internal continuous channel configuration, and furnished with special molded, high-tensile nylon no-tie net attachment clips for ease of installing or removing the nets. Sideframes shall be of a unitized design (upright and backstay, assembled in-field). Sideframes shall be secured to the crossbar with formed steel corner brackets. Backstay brackets and formed corner brackets shall be finished in a durable white powder-coated finish.

Soccer goals are furnished as standard with 1/2-13 threaded handwheel-type tie-downs, for use in floor anchors. Floor anchors must be specified separately. Removable 6" diameter wheel assemblies are included, for ease of tipping and rolling entire goal assembly to court or storage locations.

- See Page No. R-490 for specifications on No. 00491-618 Soccer Net (Pair).

PORTER No. 440101 ALUMINUM SOCCER GOALS – 6'-6" x 12'-0" **LESS NET** **PORTABLE (ONE PAIR)**

Same specification as No. 446101 with the exception that soccer goals shall be 6'-6" x 12'-0" , for U7 through U8 requirements for competition.

- See Page No. R-490 for specifications on No. 00491-612 Soccer Net (Pair).

OPTIONAL ITEMS TO SPECIFY

- See Page No. R-469 for specifications on Porter No. 00469-204 Upright Padding (Set of Two, for one goal).
- See Page No. R-412-1 for specifications on Porter No. 41218G & 41212G Rear Spreader Kit (Set of Two).
- See Page No. R-413 for specifications on Porter No. 00413-040 Internal Weight Bar Kit (Set of Four).
- See Page No. R-407 for specifications on Porter No. 00407-020 Soccer Goal Locks (Set of Two).
- See Page No. G-446-5 for specifications on Porter No. 00446-500 Indoor Transport/Storage Cart.