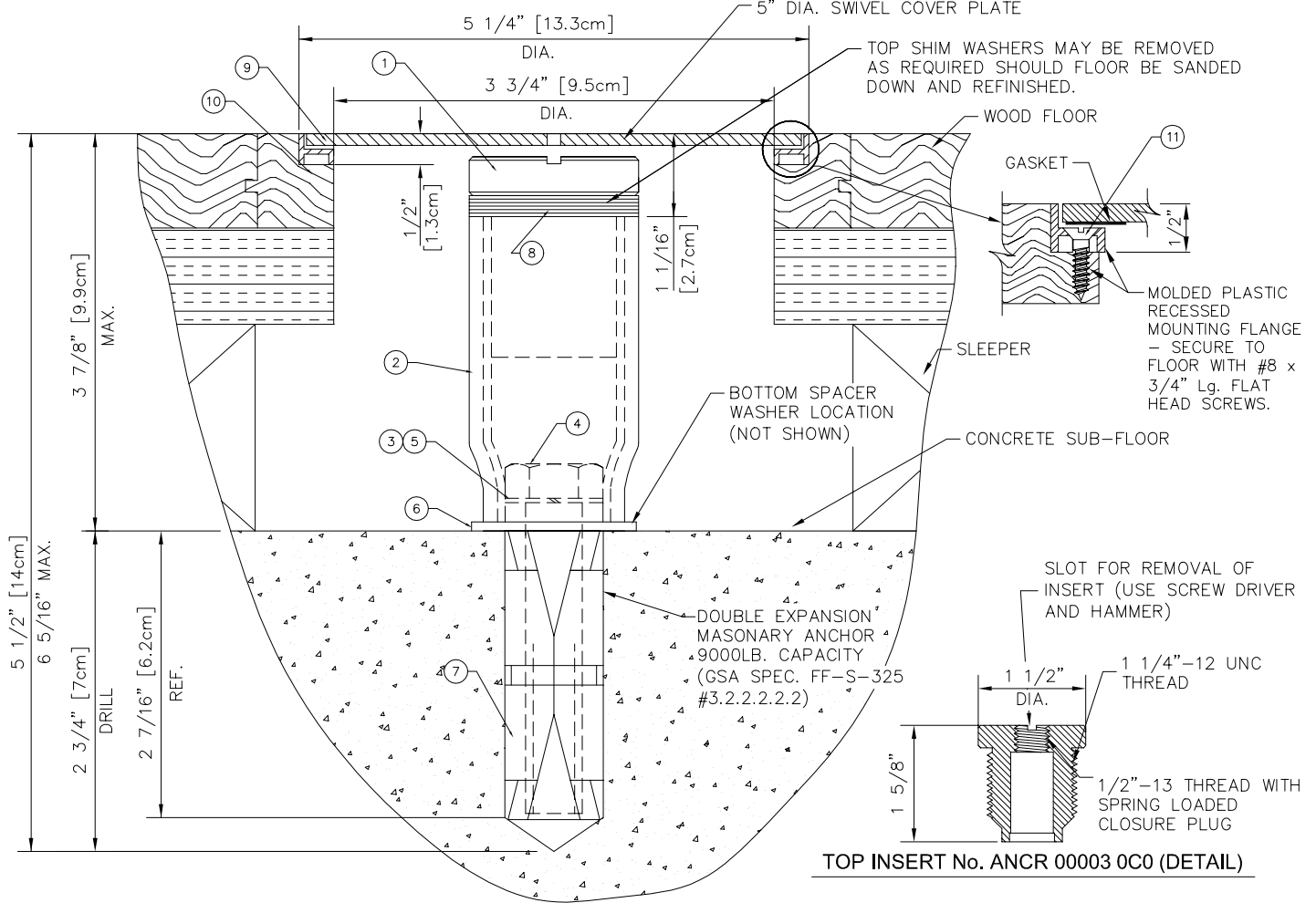


PARTS LIST			
No.	00249 000 QTY.	00249 200 QTY.	DESCRIPTION
1	1	1	ANCR 00003 0C0 FLOOR ANCHOR INSERT
2	1	1	ANCR 00023 005 SWAGED PIPE COUPLING
3	1	1	HDWE 55005 000 WROUGHT WASHER
4	1	1	HDWE 01149 0P0 HEX HEAD CAP SCREW 1/2" x 3 1/2" Lg.
5	1	1	HDWE 55006 0E0 LOC-KIT WASHER SET
6	6	6	HDWE 05005 0E0 FLATWASHER 1/2" DIA. (NOT SHOWN)
7	1	1	HDWE 58004 000 DOUBLE EXPANSION ANCHOR
8	6	6	HDWE 55004 0E0 WAVE SPRING WASHER
9	1	1	COVR 00003 0C0 COVER PLATE ASSEMBLY - CHROME
9	1	1	COVR 00003 0B0 COVER PLATE ASSEMBLY - BRASS
10	2	2	MISC 00158 000 COLLAR GASKET
11	3	3	HDWE 06100 0E0 PHILIPS FLATHEAD SCREW #8 x 3/4" Lg.
12	1	1	HDWE 00736 100 COVER REMOVAL KEY (NOT SHOWN)

INSTALLATION INSTRUCTIONS:

1. ANCHOR TO BE INSTALLED AFTER FLOOR IS IN PLACE. LOCATE POSITION OF ANCHOR ON FLOOR.
2. ROUTE OUT 5-1/4" x 1/2" DEEP HOLE IN FLOOR FOR COVER PLATE. PLACE THE 5-1/4" DIA. ALUM. RING IN CAVITY AND MARK THE 3-3/4" DIA. INSIDE CIRCLE. ROUTE OUT THIS CIRCLE THRU THE WOOD FLOOR TO THE CONCRETE SLAB BELOW.
3. IN CENTER OF COVER PLATE DRILL A 7/8" DIA. HOLE INTO CONCRETE SLAB TO A DEPTH OF 5-7/16" FROM FINISHED FLOOR USING A CARBIDE TIPPED HOLLOW CORE DRILL. IF THE TOTAL WOOD FLOOR THICKNESS IS LESS THAN 3-1/2" DRILL A 1-1/2" DIA. HOLE IN CONCRETE SUB-FLOOR FOR FLOOR ANCHOR BODY TO BE INSTALLED AT THE REQUIRED DEPTH. REMOVE TOP INSERT AND SHIM WASHERS FROM ANCHOR ASSEMBLY.
4. PLACE ANCHOR ASSEMBLY (LESS TOP INSERT) INTO HOLE. TOP OF ANCHOR MUST BE 1-1/16" (±1/16") BELOW FINISHED FLOOR. USE BOTTOM SPACER WASHERS AS REQUIRED.
5. WHEN INSERT IS PROPERLY LOCATED, TIGHTEN 1/2" BOLT SECURELY INTO DOUBLE ACTING MASONARY ANCHOR WITH SOCKET WRENCH.
6. ADD TOP (WAVE TYPE) SHIM WASHERS AS REQUIRED TO BRING TOP OF ANCHOR TO WITHIN 1/4" OF FINISHED FLOOR WHEN TIGHTENED INTO FLOOR ANCHOR BODY. TIGHTEN INSERT SECURELY INTO BODY BY TAPPING IN A CLOCKWISE DIRECTION WITH LARGE SCREWDRIVER INSERTED IN ONE SIDE OF GROOVE.
7. PLACE COVER PLATE IN POSITION IN 5-1/4" DIA. CAVITY AND SECURE IN PLACE WITH 8-3/4" FLAT HEAD SCREWS PROVIDED.



- _____ — 00249-000 FLOATING FLOOR ANCHOR WITH CHROME COVER (EACH)
- _____ — 00249-200 FLOATING FLOOR ANCHOR WITH BRASS COVER (EACH)
- _____ — 00249-100 HANDWHEEL WITH EXTENDED STUD (3-3/4" Lg.)

REVISION	DATE	PORTER No.	00249-000 and 00249-200 FLOATING FLOOR ANCHORS	PORTER WORLD LEADER IN QUALITY SPORTS EQUIPMENT 2500 S. 25th AVENUE BROADVIEW, ILLINOIS 60155 www.porter-ath.com	DRAWING BY AB
		CUSTOMER No.			CHECKED BY RA
© COPYRIGHT 1986 PORTER ATHLETIC EQUIPMENT CO. ALL RIGHTS RESERVED	DATE 10-16-1986	THIS PRINT IS THE PROPERTY OF PORTER ATHLETIC EQUIPMENT COMPANY AND MAY NOT BE REPRODUCED WITHOUT WRITTEN PERMISSION			PAGE No. G-249

SPECIFICATIONS

PORTER No. 00249-000 FLOATING FLOOR TYPE ANCHOR WITH CHROME COVER

Anchor shall be designed as a two-part system to allow movement or expansion of wood flooring.

Cover plate assembly shall be provided for installation in wood floor. Cover plate shall consist of molded plastic recessed mounting flange, cork gasket and a 5" diameter chrome plated cover. Cover plate shall be equipped with a swivel type retainer pin to prevent theft. Special key shall be provided for cover removal.

Floor anchor assembly shall be provided for installation into concrete sub-floor. Size of anchor is 1-1/2" in diameter by approximately 6" in length, including a double expansion type masonry anchor. Anchor shall consist of three (3) basic sections – double acting masonry anchor, anchor body, and a top threaded section that may be removed and replaced should there be any damage to the internal threads. (The internal threads (1/2-13 NC) shall be protected by a spring loaded plug with ample clearance between plug and inside of body to allow free movement at all times. Shim washers shall be furnished to allow top of anchor to be located 1/4" below finished wood floor. Top of anchor shall be chrome plated. Anchor body shall be zinc-plated.

Anchor assembly designed for use in floating wood floors with a maximum thickness of 3-7/8". Anchor shall provide for a total floor movement of 2-1/4" (1-1/8" on each side of 1-1/2" anchor body).

Specify optional handwheels (Item No. 00249-100 handwheel with extended stud) for use on floor mounted equipment.

PORTER No. 00249-200 FLOATING FLOOR TYPE ANCHOR WITH BRASS COVER

Same specification as No. 00249-000 above, except that cover plate is brass plated.