

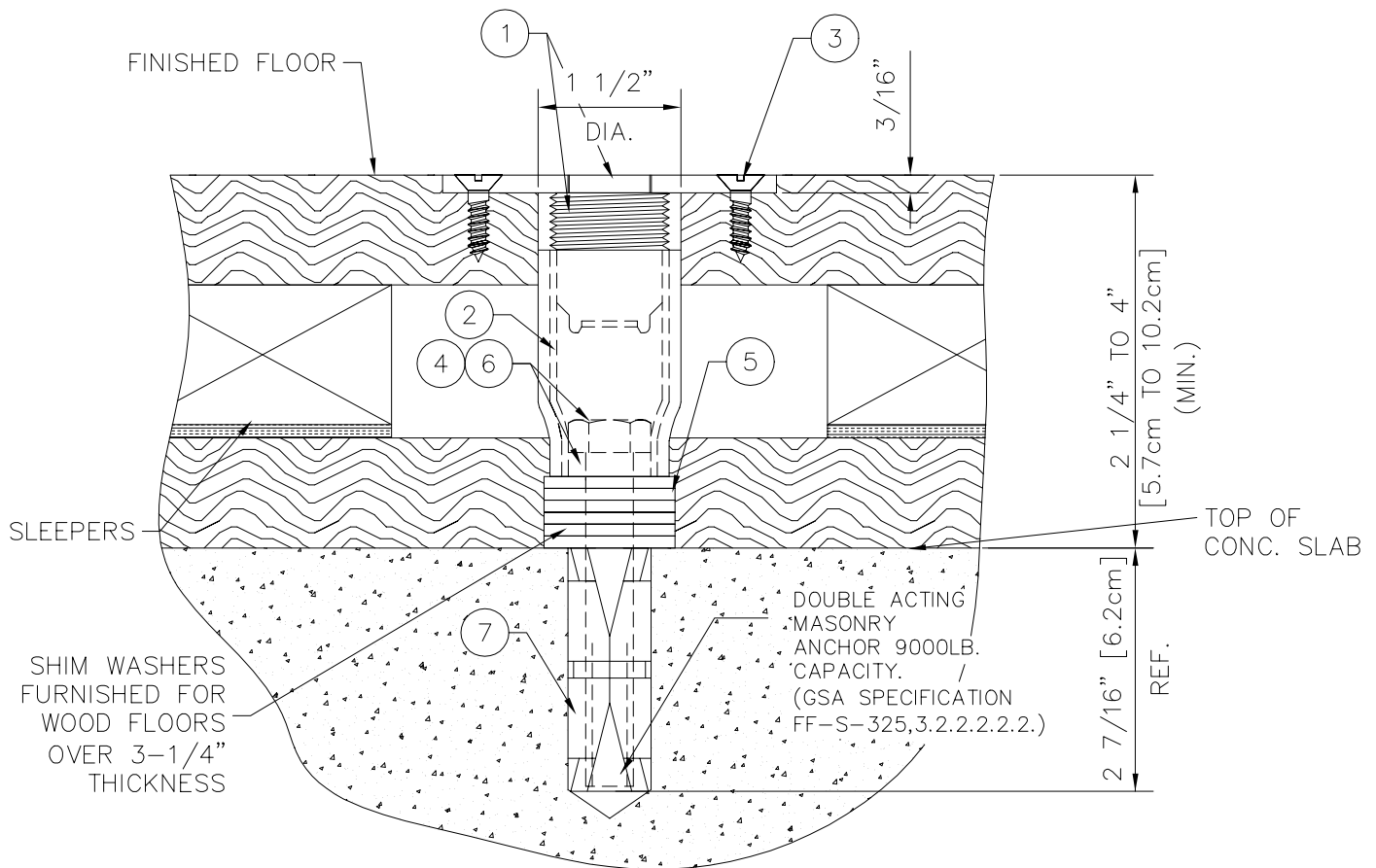
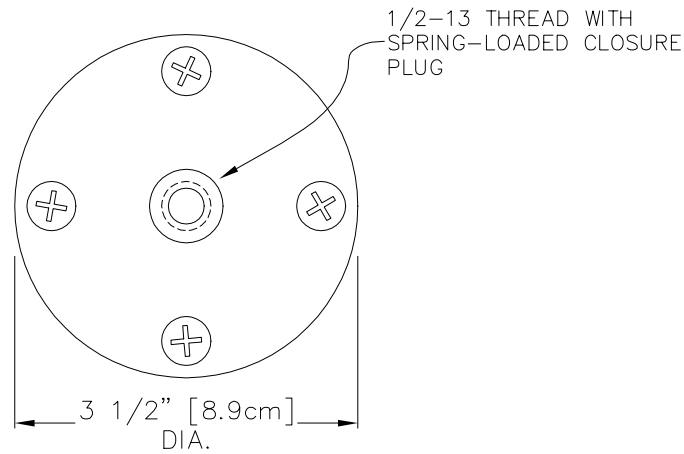
INSTALLATION NOTE:

ROUTE OUT 3/16" DEEP (3 1/2" DIA.) HOLE IN WOOD FLOOR FOR TOP PLATE. SCREW ASSEMBLY INTO BOTTOM HOUSING (INSTALLED IN CONCRETE SLAB) AND SECURE IN WOOD FLOOR WITH FOUR # 14x3/4" Lg. FLAT HEAD WOOD SCREWS.

*ON FLOORS WHERE TOTAL THICKNESS OF WOOD FLOOR (TO CONCRETE SLAB) IS LESS THAN 2 1/4" USE EITHER #00243-000 OR #00247-100 FLOOR ANCHORS.

*FOR FLOORS THAT EXCEED 4" IN THICKNESS EXTRA SHIM WASHERS AND LONGER 1/2" HEX HEAD CAP SCREW TO BE PROVIDED BY INSTALLER AS REQUIRED.

PARTS LIST			
No.	QTY.	DESCRIPTION	
1	1	ANCR 00012 0C0	TOP PLATE ASSEMBLY
2	1	ANCR 00023 005	SWAGED PIPE COUPLING
3	4	HDWE 06011 0E0	PHILIPS FLAT HEAD # 14 x 3/4" Lg.
4	1	HDWE 01149 0P0	HEX HEAD CAP SCREW 1/2" x 3 1/2" Lg.
5	6	HDWE 05005 0E0	FLATWASHER 1/2" DIA.
6	1	HDWE 55005 000	WROUGHT WASHER 1/4" THICK -1 1/8" DIA.
7	1	HDWE 58004 000	DOUBLE EXPANSION ANCHOR



— 00244-000 SLEEPER-TYPE ADJUSTABLE FLOOR PLATE

REVISION	DATE	PORTER No.
△	:	.
△		CUSTOMER No.
△		
© COPYRIGHT 1979 PORTER ATHLETIC EQUIPMENT CO. ALL RIGHTS RESERVED	DATE	
	2-14-1979	

00244-000
SLEEPER-TYPE
ADJUSTABLE FLOOR PLATE

THIS PRINT IS THE PROPERTY OF PORTER ATHLETIC EQUIPMENT COMPANY AND MAY NOT BE REPRODUCED WITHOUT WRITTEN PERMISSION


WORLD LEADER
IN QUALITY SPORTS EQUIPMENT
 2500 S. 25th AVENUE
 BROADVIEW, ILLINOIS 60155
 www.porter-ath.com

DRAWING BY	AB
CHECKED BY	RA
PAGE No.	G-244

SPECIFICATIONS

PORTER No. 00244-000 SLEEPER TYPE FLOOR PLATE **(For installation in wood over concrete type floors where total thickness of wood floor exceeds 2-1/4")**

Floor plate shall be designed to prevent movement of wood floors when installed.

Anchor shall consist of three (3) basic sections – top plate assembly, lower body assembly and a double acting masonry anchor.

Top plate assembly to be 3/16" thick x 3-1/2" diameter with 1/2-13 UNC internal threaded insert. Internal threads shall be protected by a spring-loaded closure plug. Underside of plate to incorporate an external threaded body assembly for securing into internal thread on lower body assembly. Top plate assembly to have countersunk holes for attaching into wood flooring with four (4) #14 x 3/4" lg. flat head wood screws.

Lower body shall be 1-1/2" in diameter with 1-1/4-12 UNC internal thread for securing top plate assembly to the concrete sub-floor to prevent movement of the wood floor. Body shall be zinc plated.

Lower body shall be secured into a double acting, expansion type masonry anchor by means of a 1/2" diameter plated machine bolt. Masonry anchor shall provide a 9000 pound pullout strength when properly installed (G.S.A. Specification FF-S-325, #3.2.2.2.2.2. which tests to a 9000 pound pullout when installed in concrete with a minimum of 3,000 P.S.I. compression strength.)

Shim washers (6) shall be provided for spacing between bottom of body and concrete slab when required.