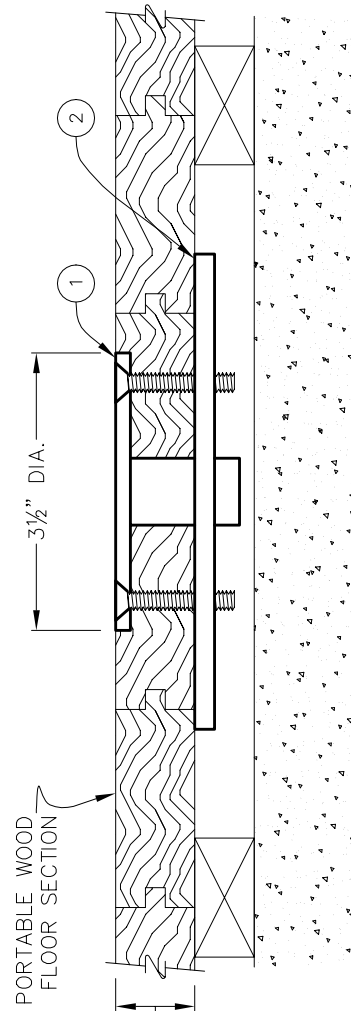
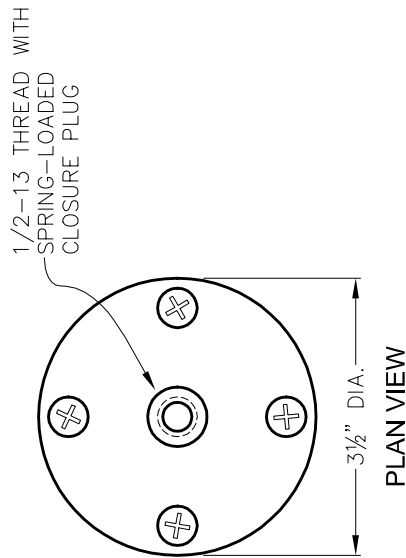
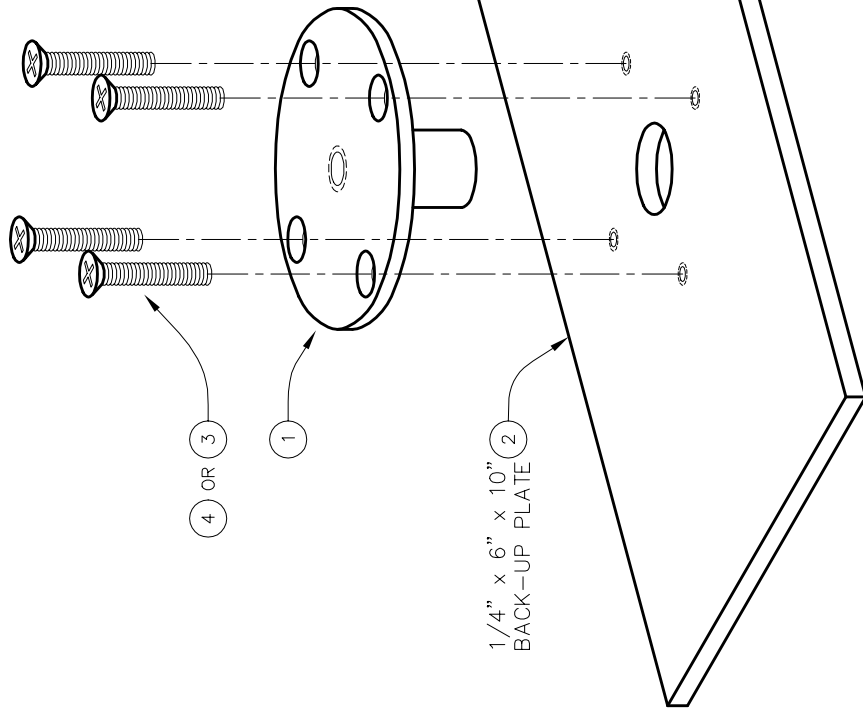


PARTS LIST		
No.	QTY.	DESCRIPTION
1	1	PLTE 00018 0C0 FLOOR PLATE ASSEMBLY
2	1	PLTE 00143 002 BACK-UP PLATE
3	4	HDWE 06009 0E0 1/4" x 1 1/2" Lg. FLAT HEAD SCREW
4	4	HDWE 06010 0E0 1/4" x 2 3/4" Lg. FLAT HEAD SCREW

REINFORCING PLATE IS MOUNTED UNDER THE PORTABLE FLOOR PANELS TO PROPERLY DISTRIBUTE THE LOADING ON THE WOOD SECTIONS



1/4" MAXIMUM THICKNESS WITH 1 1/2" Lg. SCREWS
 2 1/2" MAXIMUM THICKNESS WITH 2 3/4" Lg. SCREWS

PORTABLE FLOOR ANCHOR TO BE USED WITH PORTABLE BACKSTOPS No. 735, 1235 AND 1535. REFER TO PAGE No. B-737, B-1236 OR B-1536 FOR FLOOR ANCHOR LOCATIONS.

— 00242-900 FLOOR ANCHOR FOR PORTABLE FLOOR

REVISION	DATE	porter No.
		CUSTOMER No.
		DATE
		1-1-2001

00242-900
FLOOR ANCHOR
FOR PORTABLE FLOOR

THIS PRINT IS THE PROPERTY OF PORTER ATHLETIC EQUIPMENT COMPANY AND MAY NOT BE REPRODUCED WITHOUT WRITTEN PERMISSION

porter[®]
 WORLD LEADER
 IN QUALITY SPORTS EQUIPMENT
 2500 S. 25th AVENUE
 BROADVIEW, ILLINOIS 60155
 www.porter-ath.com

DRAWING BY RJM
CHECKED BY EAS
PAGE No. G-242-9

SPECIFICATIONS

PORTER No. 00242-900 FLOOR ANCHOR FOR PORTABLE FLOOR

Floor anchor is designed for use in portable wood flooring systems (maximum 2-1/2" thickness), to be used in conjunction with Porter portable backstop systems (No. 735, 1235, 1535) only.

Top plate to be 3-1/2" diameter x 3/16" thick, with a standard 1/2-13 N.C. threaded insert. Internal threads shall be protected by a spring loaded plug with ample clearance between plug and inside wall of body to allow free movement at all times.

Bottom back-up plate to be 1/4" x 6" x 10", and shall be located under the portable floor panels to properly distribute the loading on the wood sections.

Top plate to be secured to bottom plate with four (4) 1/4-20 plated, phillips, flat head machine screws. Screws shall be provided in two lengths:

- 1-1/2" long for maximum floor thickness of 1-1/4"
- 2-3/4" long for maximum floor thickness of 2-1/2"