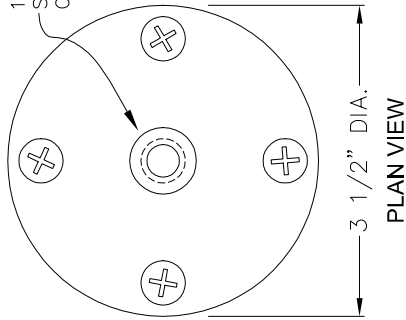
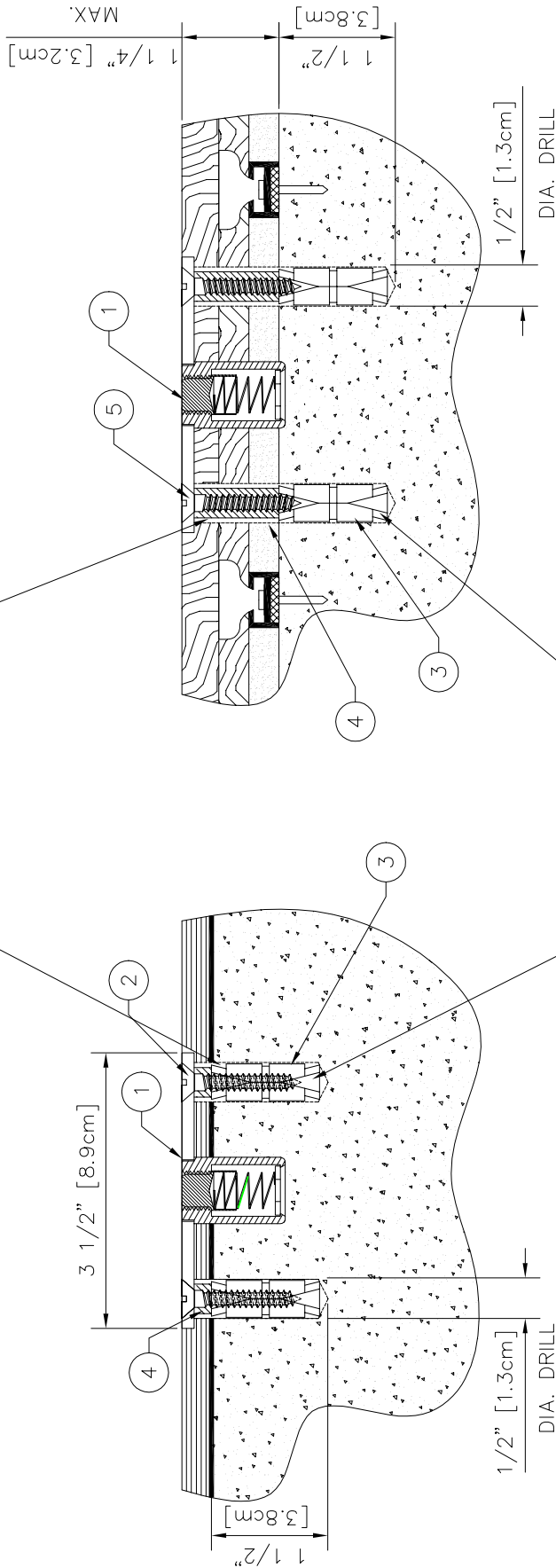


PARTS LIST		
No.	QTY.	DESCRIPTION
1	1	PLTE 00018 0C0 FLOOR PLATE ASSEMBLY
2	4	HDWE 06009 0E0 PHILIPS FLAT HEAD SCREW #14 x 1 1/2" Lg.
3	4	HDWE 58003 000 DOUBLE EXPANSION ANCHORS
4	4	SLVE 00005 000 NYLON SPACER 3/8" DIA. x 1" Lg.
5	4	HDWE 06010 0E0 FLAT HEAD SCREW 1/4" DIA. x 2 3/4" Lg.

1/2-13 THREAD WITH
SPRING-LOADED
CLOSURE PLUG



NYLON SLEEVES
(CUT IN FIELD-TOP
OF SLAB TO FINISHED
FLOOR -3/16")



SHOWN INSTALLED IN
SYNTHETIC TYPE FLOOR

SHOWN INSTALLED IN
CHANNEL - LOCK TYPE
WOOD FLOOR

DOUBLE ACTING
MASONRY EXPANSION
ANCHORS (4) 8,200 LB.
TOTAL CAPACITY.

REVISION	DATE	Porter No.
△		
△		CUSTOMER No.
△		
© COPYRIGHT 1992 PORTER ATHLETIC EQUIPMENT CO. ALL RIGHTS RESERVED		DATE 6-1-1992

00242-100
FLOOR ANCHOR
FOR SYNTHETIC OR CHANNEL-LOCK FLOORS

THIS PRINT IS THE PROPERTY OF PORTER ATHLETIC EQUIPMENT COMPANY
AND MAY NOT BE REPRODUCED WITHOUT WRITTEN PERMISSION

porter[®]
WORLD LEADER
IN QUALITY SPORTS EQUIPMENT
2500 S. 25th AVENUE
BROADVIEW, ILLINOIS 60155
www.porter-ath.com

DRAWING BY AB
CHECKED BY RA
PAGE No. G-242-1

— 00242-100 FLOOR ANCHOR FOR SYNTHETIC OR CHANNEL-LOCK FLOORS

SPECIFICATIONS

PORTER No. 00242-100 FLOOR ANCHOR

Floor anchor to be installed after finished floor is in place, by means of four (4) special double acting masonry anchors (GSA Specification FF-S-325, #3.2.2.2.2.2.) which tests to the total 8,200 pound pullout load when properly installed in a concrete slab of 3,000 P.S.I. minimum compression strength.

Anchor is designed for use in synthetic or power-lock type floors (maximum 1-1/4" thickness from finished floor to top of concrete slab) with thin concrete slab conditions.

Top plate to be 3-1/2" diameter x 3/16" thick, with a standard 1/2-13 N.C. threaded insert. Internal threads shall be protected by a spring loaded plug with ample clearance between plug and inside wall of body to allow free movement at all times.

Plate to be furnished with four (4) 1/4-20 plated, phillips, flat head machine screws x 1-1/2" long for anchoring into synthetic floors, plus four (4) 2-3/4" long machine screws as an alternate for attaching through power-lock (max. 1-1/4" thickness) type wood floors into the double acting, expansion type masonry anchors.