

REVISION	DATE	PORTER No.
1		
2		
3		
CUSTOMER No.	DATE	
	3-1-1989	

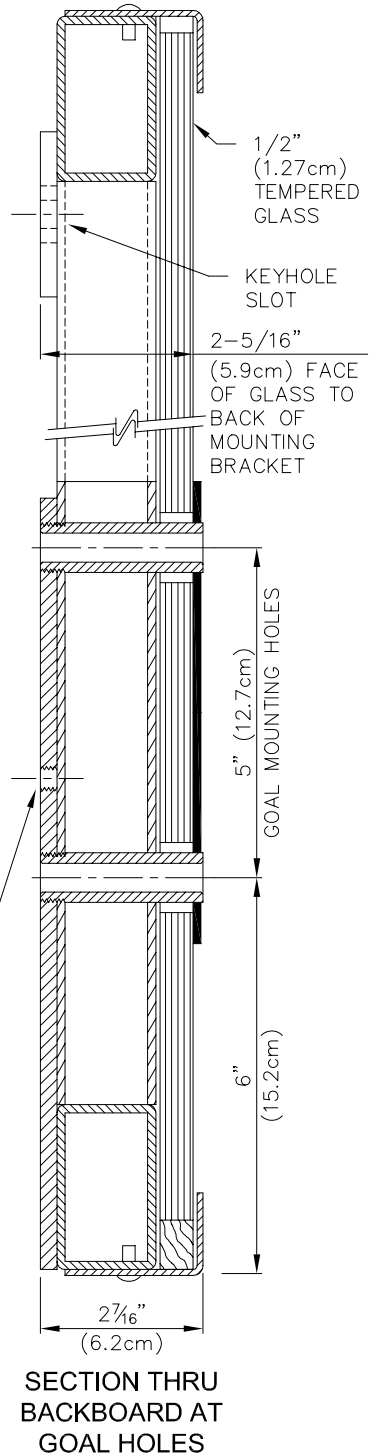
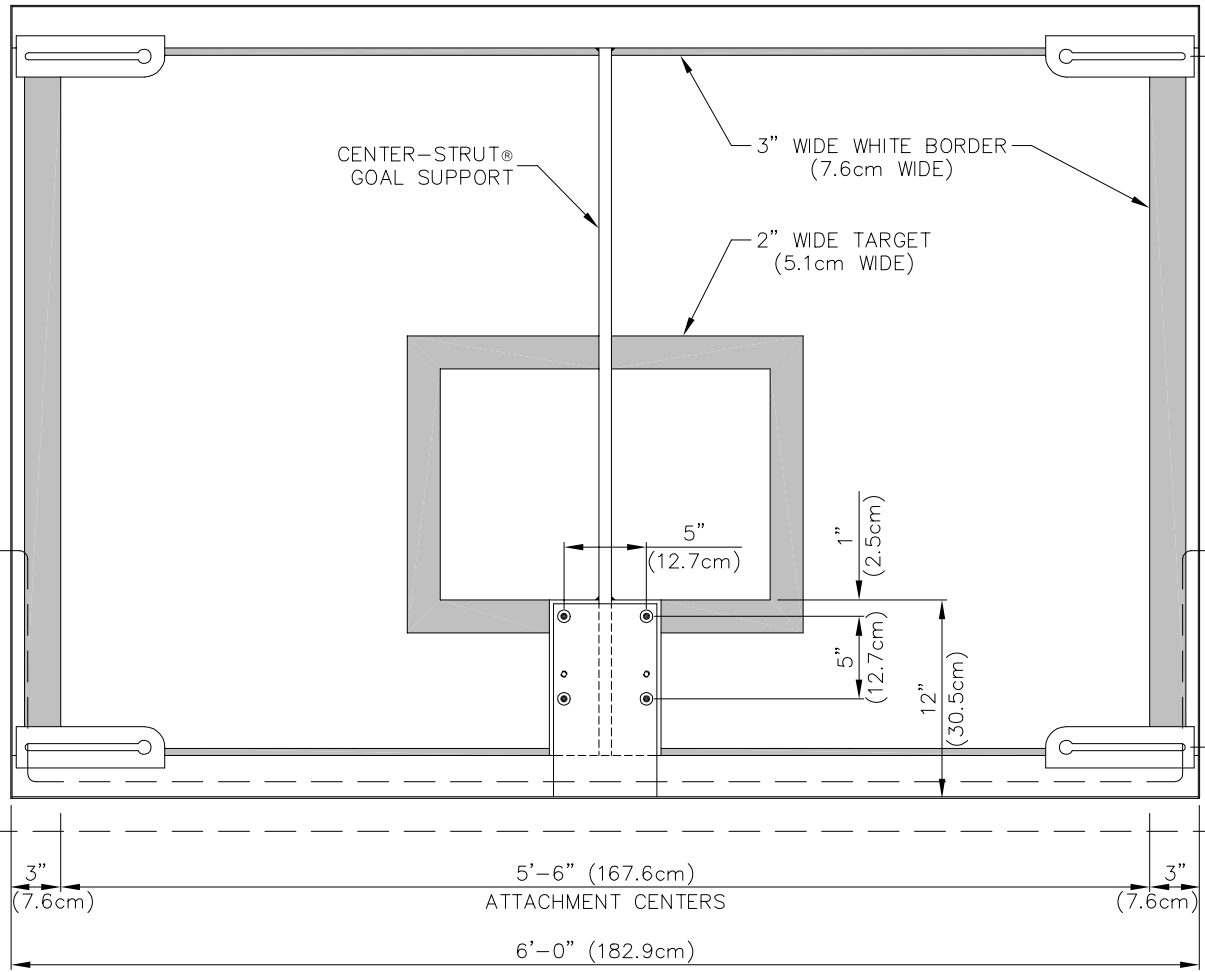
00206-000
4'-0" x 6'-0" RECTANGULAR GLASS BACKBOARD WITH ALUMINUM-FACED STEEL FRAME

THIS DRAWING IS THE PROPERTY OF PORTER ATHLETIC EQUIPMENT COMPANY AND MAY NOT BE REPRODUCED WITHOUT WRITTEN PERMISSION

Porter
 WORLD LEADER
 IN QUALITY SPORTS EQUIPMENT
 2500 S. 25th AVENUE
 BROADVIEW, ILLINOIS 60155
 www.porter-ath.com

DRAWING BY	CKM
CHECKED BY	ES
PAGE No.	B-206

© COPYRIGHT 1989 PORTER ATHLETIC EQUIPMENT CO. ALL RIGHTS RESERVED.



BACKSIDE OF BACKBOARD FLUSH MOUNTING PLATE WITH 3/8-16 TAPPED HOLES (2) FOR MOUNTING BACKBOARD TO CENTER-STRUT TYPE SUPPORT STRUCTURES

GOAL / DIRECT-MOUNT DETAIL

7/16" (1.11cm) DIA. HOLES (4) FOR MOUNTING GOAL

- 00206-000 PRO-STRUT® RECT. GLASS BACKBOARD WITH ALUMINUM-FACED STEEL FRAME
- See B-326 — 00326-XXX PADDING KIT FOR RECTANGULAR GLASS BACKBOARD (EACH)
SEE PAGE No. B-326 FOR AVAILABLE COLORS
- See B-227 — 00227-XXX PADDING KIT FOR RECTANGULAR GLASS BACKBOARD (PAIR)
SEE PAGE No. B-227 FOR AVAILABLE COLORS

OUTLINE OF OPTIONAL BACKBOARD PADDING

See B-326

See B-227

SPECIFICATIONS

PORTER No. 00206-000 PRO-STRUT® OFFICIAL 4' x 6' RECTANGULAR GLASS BACKBOARD WITH UNITIZED STEEL FRAME

Backboard shall be 4'-0" x 6'-0" to meet all NCAA, NFHS and professional requirements.

Backboard frame shall be of a welded, unitized construction fabricated from heavy wall rectangular steel tubing, aluminum-faced for professional appearance. Unitized frame shall include a vertical center strut with a unique spacer sleeve arrangement at the goal mount hole locations to transmit undue loading during slam-dunks, etc. directly through the glass and into the rear vertical strut frame to alleviate stress on the glass.

Backside of goal mount structure is provided with two tapped holes (3/8-16) to independently secure backboard to an optional direct mount goal feature which relieves all stress and shock on the backboard frame conforming to the latest NCAA Rules (BR-73, D-5). Backboard frame shall be furnished with heavy steel gusset plates in each corner incorporating keyhole slots for mounting the backboard to support structures at standard mounting centers. Rear backboard frame shall be finished in a durable neutral gray powder coated finish.

Glass shall be provided in 1/2" thick, fully tempered (heat-treated) glass section with uniform load and impact strength. Official white border and target area is "fired in" permanently on front side of glass section so that it cannot wear away. Glass section shall be secured to unitized rear frame by means of an attractive, L-shaped brushed aluminum extrusion for optimum durability. Front perimeter frame shall be secured to unitized rear frame with structural truss head rivets. Glass section shall be fitted with shock absorbing neoprene material to cushion and protect the glass section. Goal mounting holes (4) to be on standard 5" (horizontal) x 5" (vertical) mounting centers (for use with Porter Model No. 00201-H00, 00233-000 or 00235-000 goals).

Backboard protected by a limited lifetime warranty.

Backboard not recommended for outdoor use.

OPTIONAL ITEMS TO SPECIFY

- See Page No. B-326 for specifications on Porter No. 00326-XXX Backboard Padding Kits.
- See Page No. B-227 for specifications on Porter No. 00227-000 Backboard Padding Kit.