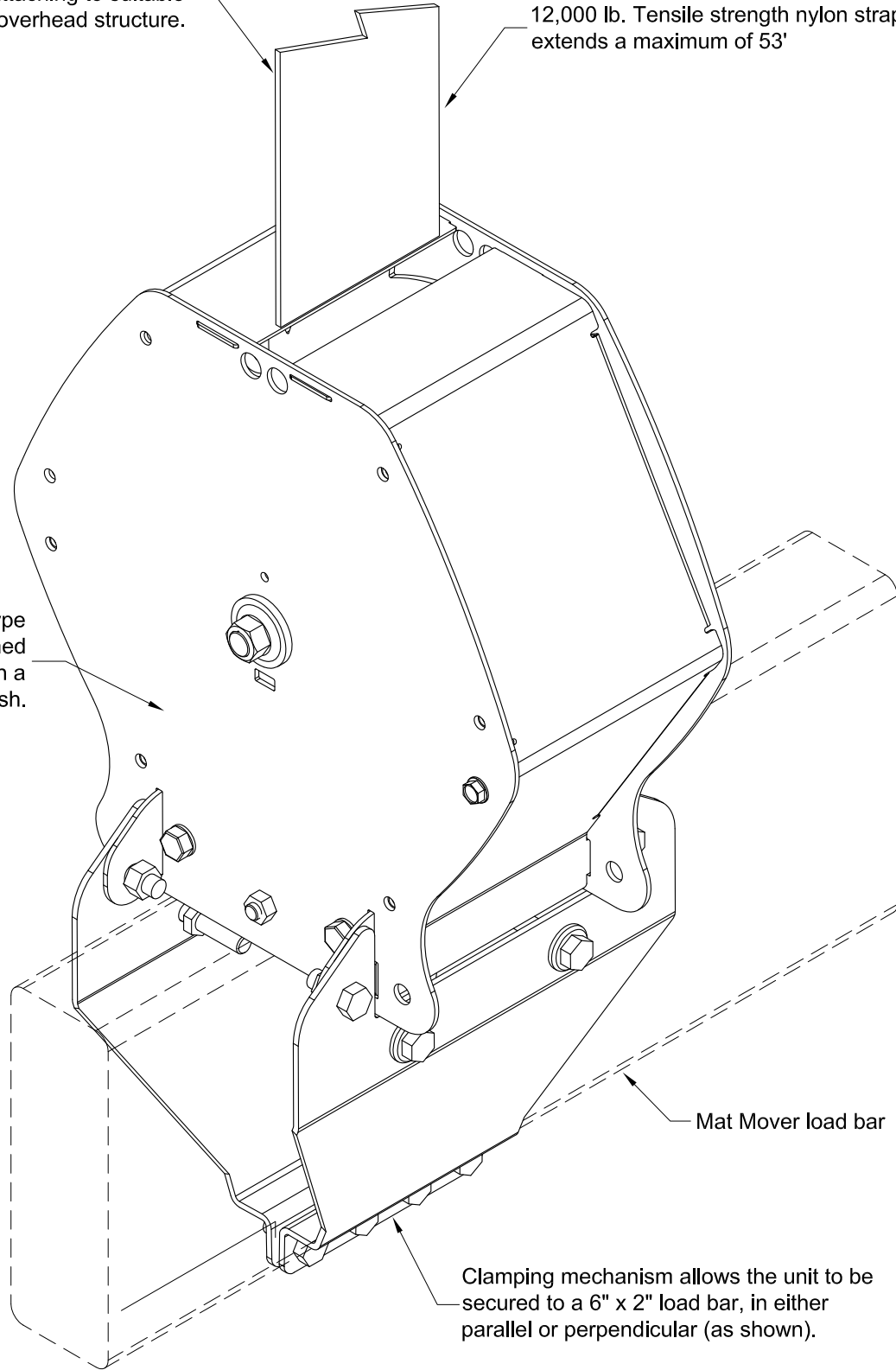


Strap buckle provided for attaching to suitable overhead structure.

12,000 lb. Tensile strength nylon strap, 4" wide, extends a maximum of 53'

Retracting spring, inertia-type lock and nylon strap contained inside an all steel frame with a powder coat finish.



Mat Mover load bar

Clamping mechanism allows the unit to be secured to a 6" x 2" load bar, in either parallel or perpendicular (as shown).

NOTE: Two (2) PL2000 required for each Mat Mover

- PL2000 - MAT MOVER SAFETY LOCK

© COPYRIGHT 2011 PORTER ATHLETIC INC.  
ALL RIGHTS RESERVED

THIS PRINT IS THE PROPERTY OF PORTER  
ATHLETIC INC. AND MAY NOT BE  
REPRODUCED WITHOUT WRITTEN  
PERMISSION

PL2000  
MAT MOVER SAFETY LOCK

**porter**<sup>®</sup>  
WORLD LEADER  
IN QUALITY SPORTS EQUIPMENT  
601 MERCURY DRIVE  
CHAMPAIGN, ILLINOIS 61822  
www.porterathletic.com

PAGE No.  
M-PL2000  
DATE  
12/30/2011

# SPECIFICATIONS

## PORTER No. PL2000 MAT MOVER® SAFETY LOCK

The "Saf-Strap" shall be directly speed sensitive to automatically lock a wrestling mat hoist in position at any time. The device will lock, whether in storage or during the raising/lowering cycle, in the event of an over-speed occurrence due to a malfunction of the hoisting apparatus, such as winch, cable, pulleys, support fittings, etc., Any increase in cycle speed or tension, whether sudden or gradual, immediately activates the locking device.

The "Saf-Strap" shall incorporate a 4" wide belt rated at 12,000 lbs., maximum breaking strength. The entire unit must be capable of withstanding a test using a 2000 lb falling weight, without strap failure or structural damage.

The locking mechanism must be fail-safe, meaning that any sticking, jamming or breakage of any of the components of the arresting mechanism results in immediate, positive locking of the reel.

The locking mechanism must react to the actual speed of the reel and prevent it from exceeding a strap speed of 1.5 feet per second regardless of whether the load suddenly drops by breakage of a component in the hoisting apparatus or whether it accelerates more slowly, as caused by a back-driving winch or the yielding of a structural component.

The locking mechanism must be self-checking, meaning that during normal use the mechanism is in constant motion to prevent long-term binding or seizing caused by dirt or corrosion. The mechanism shall actively and positively confirm, six times per revolution, that the reel is traveling at a safe speed, below 1.5 feet per second.

The action of the locking mechanism must be audible to facilitate pre-installation checking and to prove positive operation of the unit.

The locking action of the mechanism shall be by means of high strength metal components and shall apply on both sides of the reel for balanced loading and greater security.

The strap shall extend a maximum of 53 feet and shall have a safety alert patch stitched to the strap to indicate the maximum safe extension.

The strap shall incorporate a breakaway loop stitched into its lower end to indicate if the unit has been subjected to a heavy load. A bright colored warning label must be exposed if the loop stitching has been broken.

The strap shall be automatically retracted and stored on a reel equipped with a special negator type constant force spring.

The strap anchoring system must bear on the full width of the strap and be capable of taking the full breaking strength of the strap.

The reel must be supported in bearings on both sides to assure that there is no deflection under heavy load, which would cause the strap to be misaligned and suffer damage.

The unit shall incorporate a fully automatic reset requiring no poles, ropes, levers or buttons to be used.

The unit shall incorporate a universal mounting system to allow mounting either parallel or at right angles to the strap and to allow mounting on a 6" x 2" load bar.

The unit shall have an interlocking all-steel frame for strength and be powder coated for corrosion resistance and a modern, aesthetically-pleasing appearance.

**NOTE: Additional lead-time may apply for this product. Contact your Porter Technical Representative.**